

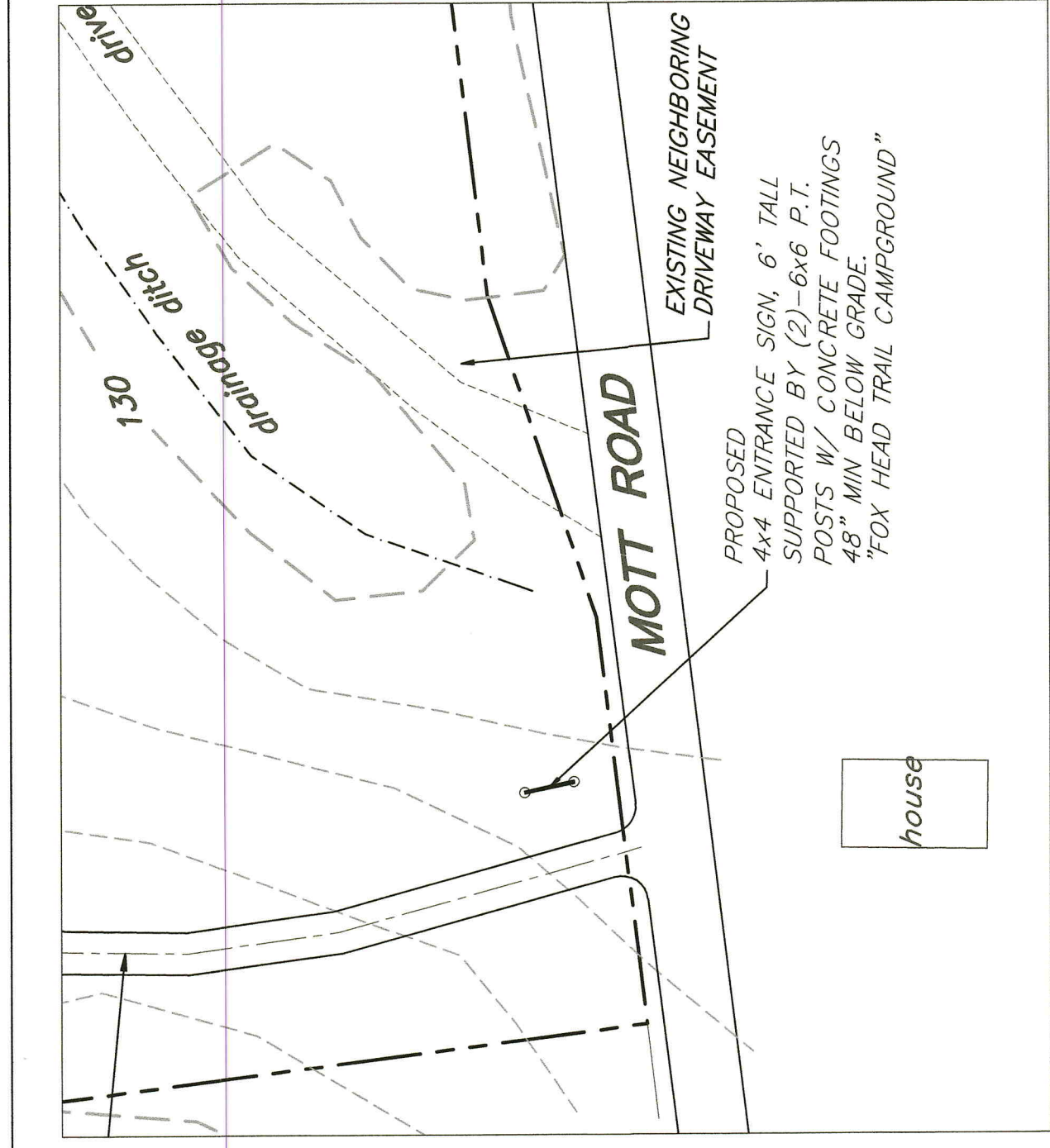
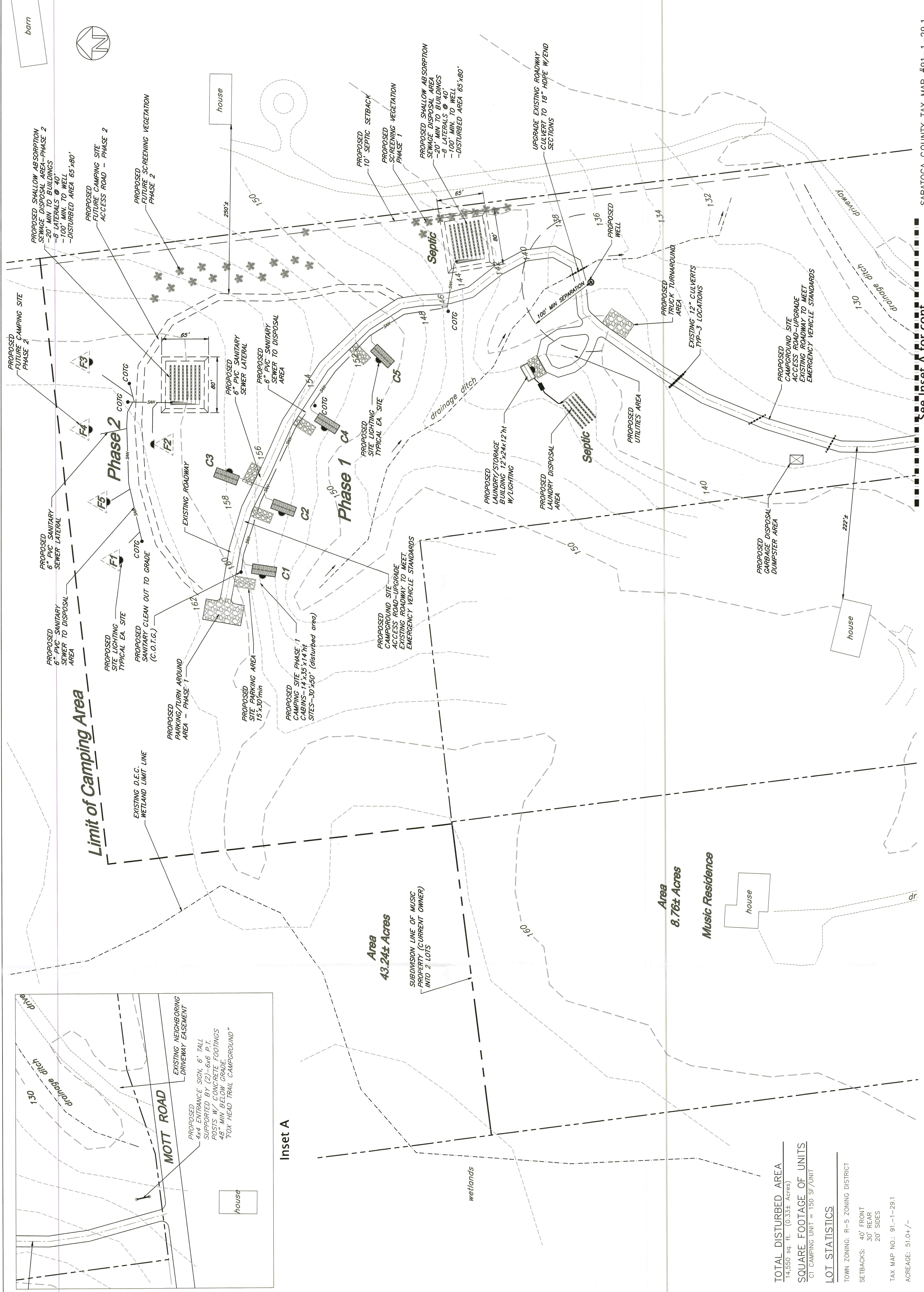
1	general revisions	TW	2.10.25
2	added site lighting, entrance sign specifics	TW	12.27.24

DESIGNED BY TW  
 DRAWN BY MCJ  
 CHECKED BY TW  
 APPROVED BY [Signature]  
 Scale: 1"=60'  
 Project No. 24-412  
 Project Date 4.1.24

**Fox Head Trail Campgrounds**  
 195 Mott Road  
 Town of Moreau, Saratoga County NY  
 Layout Plan

**WOWALES ENGINEERING**  
 100 West Valley Road  
 Saratoga Springs, NY 12158  
 (518) 589-1028 - Fax (518) 589-1029  
 www.wowaleseng.com

Sheet No. **2 of 4**  
 Drawing No. **WE-002**



**TOTAL DISTURBED AREA**  
14,550 sq. ft. (0.33± Acres)

**SQUARE FOOTAGE OF UNITS**  
CT CAMPING UNIT = 150 SF/UNIT

**LOT STATISTICS**

TOWN ZONING: R-5 ZONING DISTRICT

SETBACKS: 40' FRONT  
30' REAR  
20' SIDES

TAX MAP NO.: 91-1-29.1  
ACREAGE: 51.04 +/-

See Inset A for cont. SARATOGA COUNTY TAX MAP #91-1-29.1