




KARNER BLUE BUTTERFLY MEMO

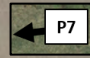
Date: July 21, 2021
To: File
Project: Jacobie Farms
From: Melanie Musarra

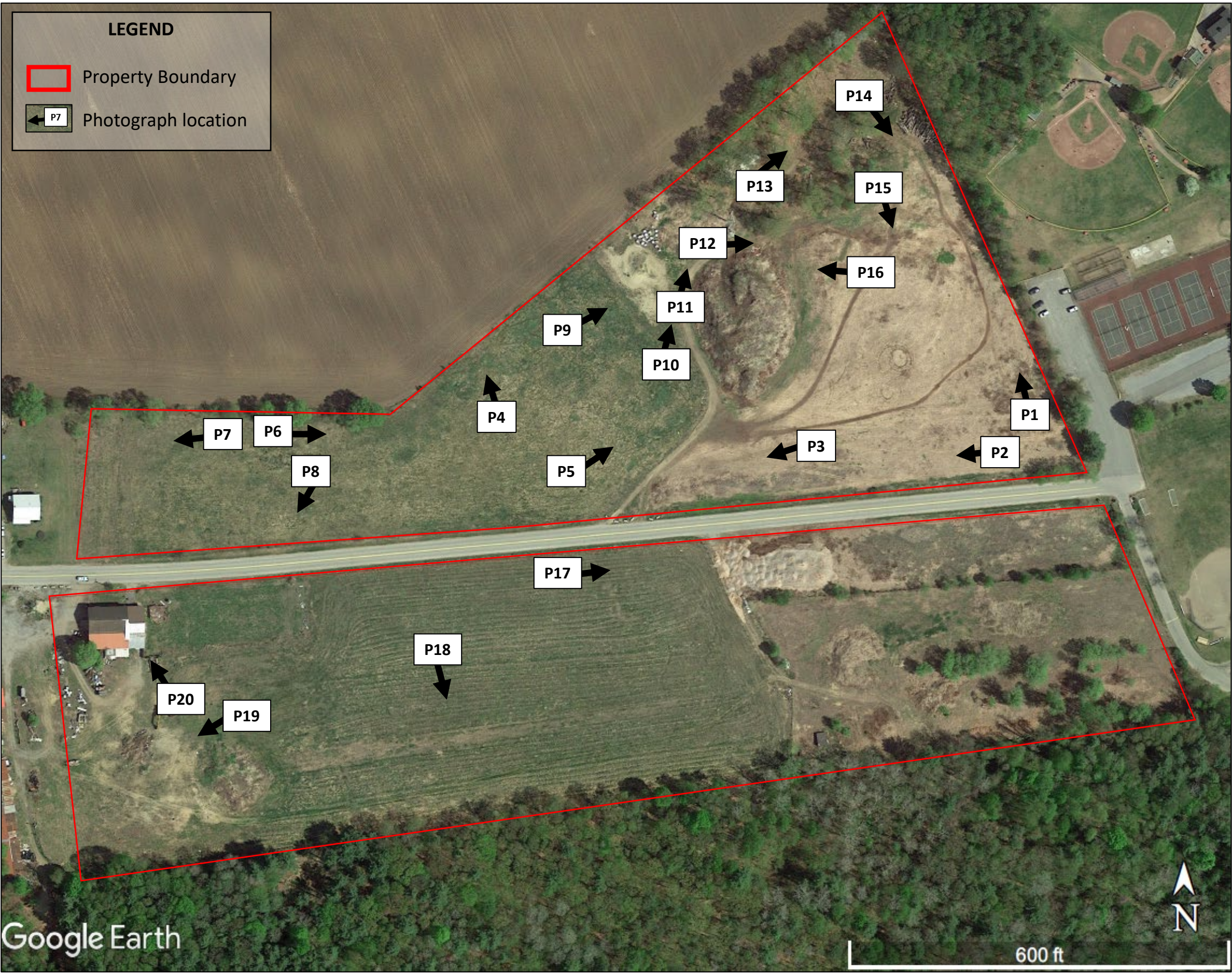
During the environmental screening stage of the proposed Jacobie Farms (Referred to as the “Project”), the USFWS’s Information, Planning and Consultation (IPaC) System was consulted for confirmations that a rare, threatened or endangered species may exist in the Project impact area. The USFWS species list includes the Karner blue butterfly (*Lycaeides melissa samuelis*) (KBB), federally and state endangered, as known to occur within the vicinity of the proposed Project area. A field habitat assessment of the entire proposed Project area was conducted on May 18, 2021.

Based on information retrieved from NYSDEC (<https://www.dec.ny.gov/animals/7118.html>), KBB can be found in dry sandy areas with open woods and clearings that support wild blue lupine (*Lupinus perennis*). KBB habitat is usually associated with pitch pine/ scrub oak or oak savannah communities that are maintained by fire at an early stage of plant succession. It is the professional opinion of EDP that a viable population of KBB is not present within the proposed Project area. The majority of surrounding land consists of residential, private forested land and agricultural fields as well as heavily traveled roads, all of which would likely impair the butterflies’ ability to use the project site. The property contains sandy soils but lacks the appropriate habitat for the KBB and does not provide the wild blue lupine necessary for their survival. Based upon our review of the *USFWS Karner Blue Butterfly Survey Protocols Within the State of New York*, habitat requirements, our on-site habitat assessment and the Project plans, it is the professional opinion of EDP that the Project will have no negative effects on the species of concern.

LEGEND

 Property Boundary

 Photograph location



Photograph Location Map

Jacobie Farms

Town of Moreau, Saratoga County

Source: Google Earth Pro



July 21, 2021



Photo 1. Looking north at existing conditions.



Photo 2. Looking west at existing conditions.



Photo 3. Looking west at existing conditions.



Photo 4. Looking north at existing conditions.



Photo 5. Looking northeast at existing conditions.



Photo 6. Looking east at existing conditions.



Photo 7. Looking west at existing conditions.



Photo 8. Looking southwest at existing conditions.



Photo 9. Looking northeast at existing conditions.



Photo 10. Looking northwest at existing conditions.



Photo 11. Looking northeast at existing conditions.



Photo 12. Looking east at existing conditions.



Photo 13. Looking northeast at existing conditions.



Photo 14. Looking southeast at existing conditions.



Photo 15. Looking south at existing conditions.



Photo 16. Looking west at existing conditions.



Photo 17. Looking east at existing conditions.



Photo 18. Looking south at existing conditions.



Photo 19. Looking southwest at existing conditions.



Photo 20. Looking northwest at existing conditions.